

Mercer+Mettle® Women's Stretch Jersey Long Sleeve Blouson Top MM1019



Delicately puffed blouson sleeves and a jewel neckline help create a feminine silhouette in this top that leans into a fashionable feel. Designed to be worn tucked or untucked, this flattering style is perfectly at ease in dressy or casual occasions.

Fabric+Weight

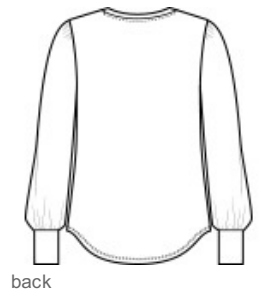
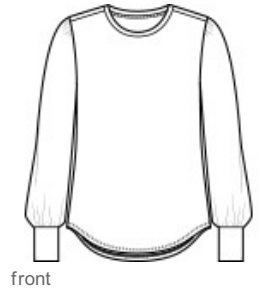
- 5-ounce, 92/8 polyester/spandex jersey

Features+Benefits

- Moisture-wicking
- Self-banded jewel neck
- Blouson sleeves with wide self-banded cuffs
- Rounded drop tail hem

CARE INSTRUCTIONS

Machine Wash Cold With Like Colors. Do Not Use Fabric Softener. Do Not Bleach. Tumble Dry Low. Remove Promptly. Cool Iron If Necessary.



HOW TO MEASURE



BUST

Measure under the arm and around the fullest part of the bust with arms down, keeping tape horizontal.

SIZE CHART

	XS	S	M	L	XL	2XL	3XL	4XL
Size	2	4/6	8/10	12/14	16/18	20/22	24/26	28/30
Bust	32-34	35-36	37-38	39-41	42-44	45-47	48-51	52-55

COLOR INFORMATION

Please note: PMS code information is shown only when an exact match is available.



Deep Black
PMS BLACK C



Insignia Blue



Rosewood
PMS 4077C



Sage